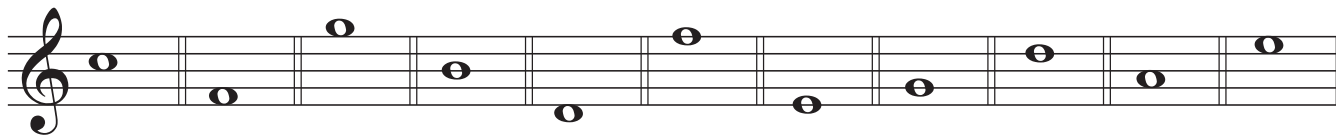
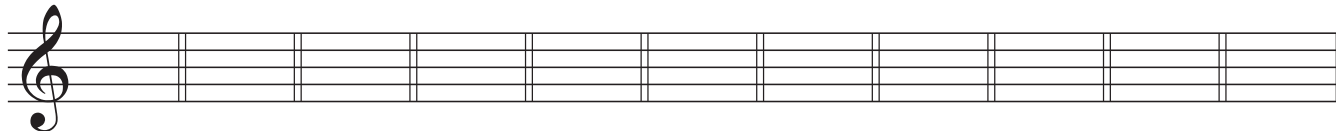


NOTE REVIEW

A. Write the letter name of the note below the staff.



B. Draw the note indicated below the staff.



(string) $\frac{F}{4}$ $\frac{E}{1}$ $\frac{A}{}$ $\frac{B}{}$ $\frac{D}{2}$ $\frac{D}{4}$ $\frac{C}{}$ $\frac{E}{4}$ $\frac{F}{1}$ $\frac{G}{3}$ $\frac{G}{1}$

Practice Reading Test

