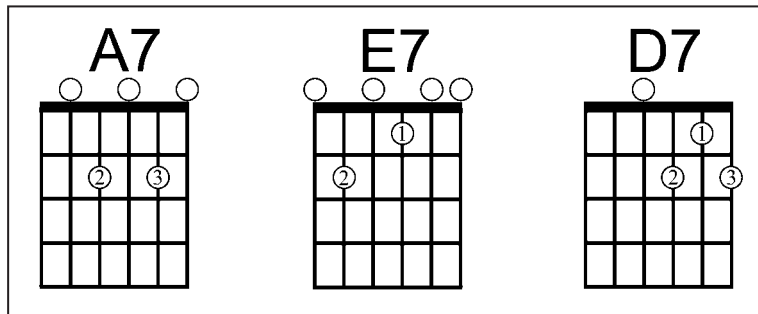


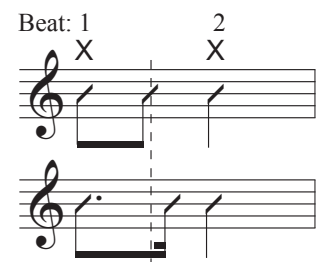
Lesson 7



The Shuffle Strumming Pattern

Normally, the beat is divided evenly – the first 8th note right on the beat and the second 8th note exactly at the halfway point between beats:

When strums are shuffled (also called *swinging*), the downstrum is held a little longer and therefore, the upstrum has to come up a little quicker:



12-Bar Blues

Brush the strings when strumming. On the downstrum of beats 2 & 4, strum with *slightly* more force.

The 12-bar blues progression is as follows:

- Bar 1: A (Guitar Chord)
- Bar 2: D (Guitar Chord)
- Bar 3: A (Guitar Chord)
- Bar 4: A7 (Guitar Chord)
- Bar 5: D (Guitar Chord)
- Bar 6: D7 (Guitar Chord)
- Bar 7: A (Guitar Chord)
- Bar 8: A7 (Guitar Chord)
- Bar 9: E7 (Guitar Chord)
- Bar 10: D7 (Guitar Chord)
- Bar 11: A7 (Guitar Chord)
- Bar 12: E7 (Guitar Chord)