

Commissoned by the Vancouver Symphony Orchestra School of Music, Stanton Jack, Director
for its Orpheus Showcase Concert, June 24, 2018

MUSIC FOR A LOONIE

VIOLIN I

Lou Warde

With energy! ♩ = 86

The musical score for Violin I is written in G major (one sharp) and 4/4 time. The tempo is marked as ♩ = 86. The score begins with a *pizz.* (pizzicato) instruction and a *mf* (mezzo-forte) dynamic. The first five measures are followed by an *arco* (arco) instruction and a dynamic change from *pp* (pianissimo) to *p* (piano). Measure 12 is marked with a box 'A'. Measure 16 features a *mf* dynamic and a *II* (second ending) marking. Measure 20 starts with a *f* (forte) dynamic and ends with a *ff* (fortissimo) dynamic. Measure 24 is marked with a box 'B' and a *2* (second ending) marking. Measure 29 starts with a *mf* dynamic and ends with a *f* dynamic. Measure 33 is marked with a *f* dynamic. Measure 36 is marked with a *f* dynamic and a *4* (fourth ending) marking.

Music for a Loonie, Vln. 1, p. 2

39 **C** pizz. *mf*

44 *f* arco

48 **D** *f*

52

58 **E** *ff*

62

67 **F** pizz. *mf*

74 arco *f*

77 *ff*

81 **G**

86 *p* *ff*

*The higher octave notes at mm. 62-65 and 67-69 are preferred. However, for intonation reasons, it may be necessary for some (or all) to take the lower octave.

Commissoned by the Vancouver Symphony Orchestra School of Music, Stanton Jack, Director
for its Orpheus Showcase Concert, June 24, 2018

MUSIC FOR A LOONIE

VIOLIN II

Lou Warde

With energy! ♩ = 86

pizz.
mf

6
arco
p *p* *f* **A**

13

17
mf *p* *f*

22
ff

27 **B**
mf *mf*

31
f *mf*

34

37 **C**
pizz. *mf*

40

Music for a Loonie, Vln. II, p. 2

The image shows a musical score for Violin II, page 2 of 'Music for a Loonie'. The score is in treble clef with a key signature of one sharp (F#) and a 7/8 time signature. It consists of ten staves of music, numbered 44 through 86. The music features various techniques including arco and pizzicato, dynamics such as f, ff, mf, and p, and articulation marks like accents and slurs. There are also performance instructions like 'arco' and 'pizz.'. A double bar line with a fermata above it appears at the end of the first staff. Chord boxes for D, E, and F are placed above the notes. A '3' indicates a triplet in the sixth staff. The score ends with a final double bar line and a fermata.

*The higher octave notes at mm. 57-59 and 67-69 are preferred. However, for intonation reasons, it may be necessary for some (or all) to take the lower octave.

Commissoned by the Vancouver Symphony Orchestra School of Music, Stanton Jack, Director
for its Orpheus Showcase Concert, June 24, 2018

MUSIC FOR A LOONIE

VIOLA

With energy! ♩ = 86

Lou Warde

6 **3** arco **p** **A** (Snap pizz.) **f**

13 **p** **f** arco

18 **mf** **f** **ff**

23

27 **B** **2** **mf**

31

35

39 **C** pizz. **mf**

*With the left hand, slap your lap to get a bright and sharp percussive sound.

Music for a Loonie, Vla., p. 2

43 *f* arco

47 *f* **D** arco V

54 *f* **E** *ff*

60

66 *f* 3 3

69 **F** pizz. *mf*

74 *f* arco at tip V V V V

77

80 **G**

84 *p* *ff*

MUSIC FOR A LOONIE

CELLO

Lou Warde

With energy! ♩ = 86

pizz.
mf

7
2 arco *p* *f* **A**

13
mf

18
mf *f* *ff*

23 **B** *mf*

28
mf

38 **C** pizz. *f* *mf*

42

46

Music for a Loonie, Vc., p. 2

50 **D** arco
f

58 **E**
ff

62

66

70 **F** pizz. arco
mf *f*

75

78

81 82 **G**

86
p *ff*

Commmisioned by the Vancouver Symphony Orchestra School of Music, Stanton Jack, Director
for its Orpheus Showcase Concert, June 24, 2018

MUSIC FOR A LOONIE

DOUBLE BASS

Lou Warde

With energy! ♩ = 86

11 **A** arco *p*

15 *mf*

19 *f* *ff*

23

27 **B** *mf*

33

39 **C** pizz. *f* *mf*

*With the left hand, slap the shoulder or side of the bass to get a bright and sharp percussive sound.

Music for a Loonie, D.B., p. 2

43



47



50

D

arco



56

E



64



70

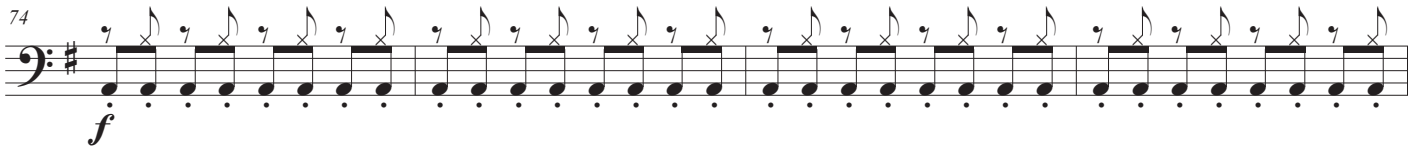
F

pizz.

mf



74



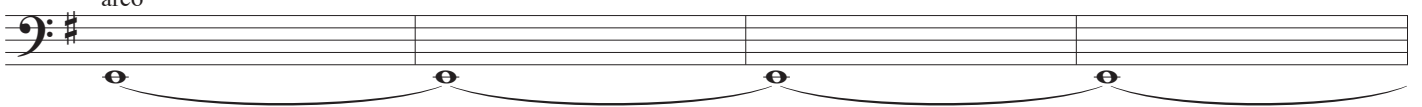
78



82

G

arco



86

